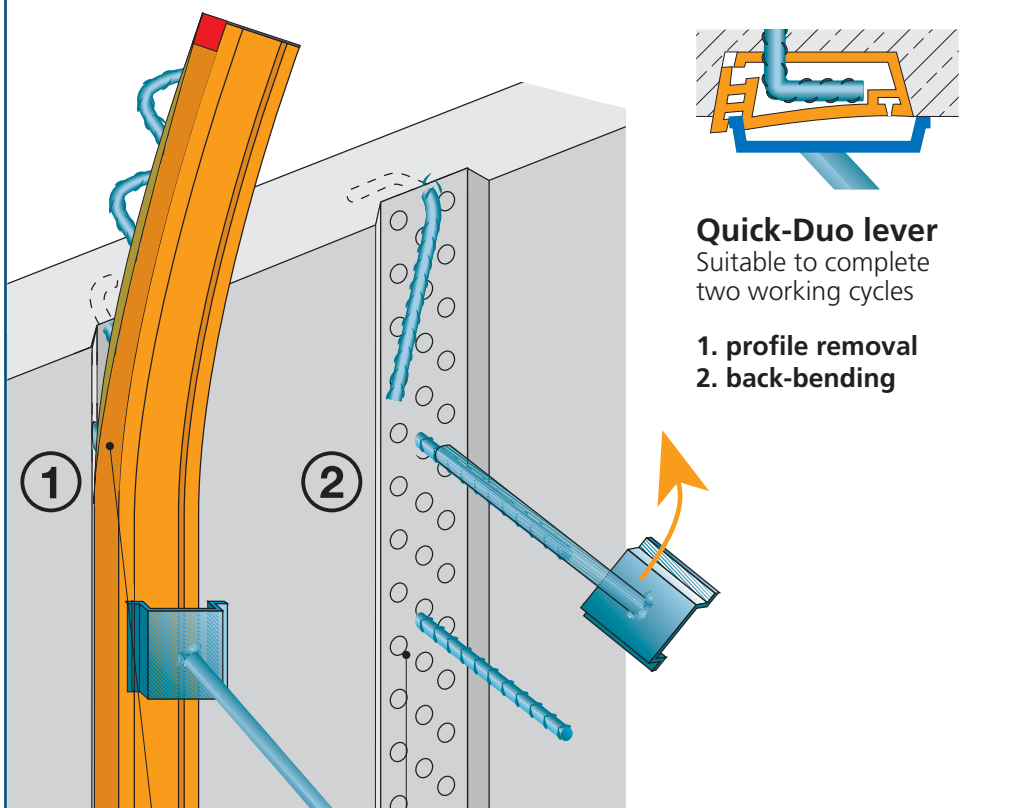


Quick-BRA

The „intelligent“ back-bending joint

Best connection guaranteed

Concrete to concrete



Quick-Duo lever
Suitable to complete
two working cycles

1. profile removal
2. back-bending

- no cutting to length
- no residue

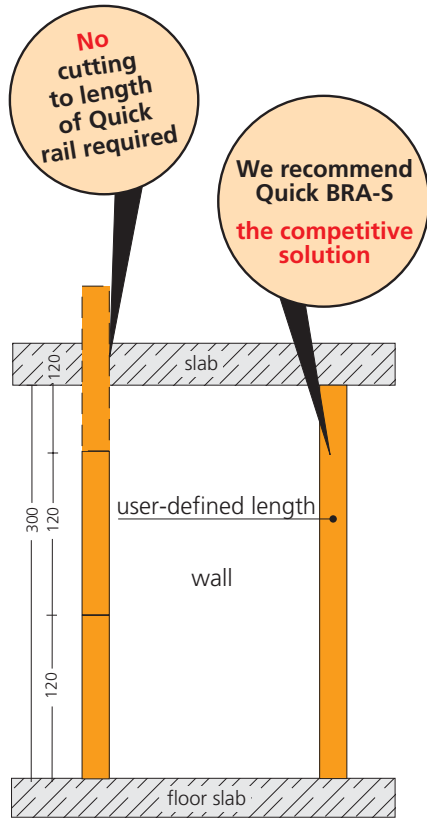
Secure and efficient – without compromise

- **concrete to concrete**
- complete removal of profile
- **trapezoidal shape**, guaranteeing the complete static cross section
- **optimum data** – 80% absorption of shear and transverse forces
- user-defined lengths
- curved elements
- optional stirrup lengths
- optional stirrup spacing
- BST 500S structural steel from **Ø 8 to Ø 14 mm**
- considerable benefits in wage costs and time
- eco-friendly



BRA – The standard range of products

for all wall and slab connections



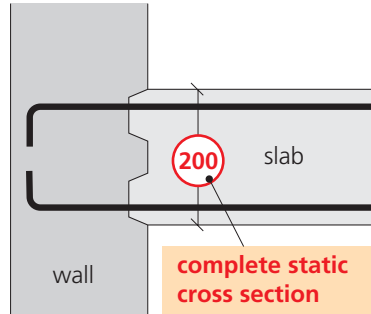
Quick BRA
A product range to connect elements providing many technical advantages (utility patent)

- secure **concrete to concrete** connection
- due to the fact that the profiles are completely removed
- low risks of injuries because the profile's body is made of plastic (TÜV-tested)
- low labour costs due to a quickly accomplished assembly and disassembly
- all lengths up to 5.00 m

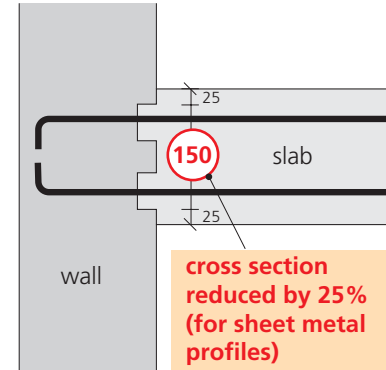
Static comparison of two systems

Plastic profile

Trapezoidal shape by Quick



Sheet metal profile by competitor



Static data according to
DIN 1045-1:2001-07
(in line with EN 206)

Basic size of the anchoring length l_0 (good bonding conditions)										
Nominal diameter d_s [mm]	Compressive strength of concrete f_{ck} (N/mm ²)									
	12	16	20	25	30	35	40	45	50	55
	Anchoring length l_0 (cm)									
8	54	43	38	32	29	26	24	22	20	20
10	68	54	47	40	36	32	29	27	25	25
12	82	65	57	48	43	38	35	33	30	30
14	95	76	66	56	51	45	41	38	35	35

In line with SIA 262 or SN EN 206 in Switzerland.

So finden Sie den richtigen
Bewehrungsdurchmesser und Abstand

reinforcement cross sections a_s
(cm²/m)

BSt 500 S:							
Stirrup spacing cm	Ø Bar diameter in mm						Bars pcs/m
	6	8	10	12	14	16	
6.0	4.71	8.38	13.09	18.85	25.66	33.52	16.7
6.5	4.35	7.73	12.08	17.40	23.68	30.95	15.4
7.0	4.04	7.18	11.22	16.16	21.99	28.73	14.3
7.5	3.77	6.70	10.47	15.08	20.52	26.81	13.4
8.0	3.53	6.28	9.82	14.14	19.24	25.14	12.5
8.5	3.33	5.91	9.24	13.31	18.11	23.66	11.8
9.0	3.14	5.59	8.73	12.57	17.10	22.34	11.1
9.5	2.98	5.29	8.27	11.90	16.20	21.17	10.5
10.0	2.83	5.00	7.85	11.31	15.39	20.11	10.0
10.5	2.69	4.79	7.48	10.77	14.66	19.15	9.5
11.0	2.57	4.57	7.14	10.28	13.99	18.28	9.1
11.5	2.46	4.37	6.83	9.84	13.39	17.49	8.7
12.0	2.36	4.19	6.54	9.42	12.83	16.76	8.3
12.5	2.26	4.02	6.28	9.05	12.32	16.09	8.0
13.0	2.17	3.87	6.04	8.70	11.84	15.47	7.7
13.5	2.09	3.72	5.82	8.38	11.40	14.90	7.4
14.0	2.02	3.59	5.61	8.08	11.00	14.36	7.1
14.5	1.95	3.47	5.42	7.80	10.62	13.87	6.9
15.0	1.89	3.35	5.24	7.54	10.26	13.41	6.7
15.5	1.82	3.24	5.07	7.30	9.93	12.97	6.5
16.0	1.77	3.14	4.91	7.07	9.62	12.57	6.3
16.5	1.71	3.05	4.76	6.85	9.33	12.19	6.1
17.0	1.66	2.96	4.62	6.65	9.05	11.83	5.9
17.5	1.62	2.87	4.49	6.46	8.79	11.49	5.7
18.0	1.57	2.79	4.36	6.28	8.55	11.17	5.6
18.5	1.53	2.72	4.25	6.11	8.32	10.87	5.4
19.0	1.49	2.65	4.13	5.95	8.10	10.58	5.3
19.5	1.45	2.58	4.03	5.80	7.89	10.31	5.1
20.0	1.41	2.51	3.93	5.65	7.69	10.05	5.0

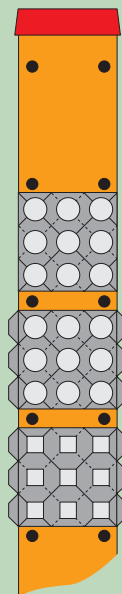
Safety

Shear transfer up to 80% with
burl film cover

Construction
Engineering
Dortmund
University

test Report
No. 9013

Quick BRA profile



up to 42%
without burl film
cover

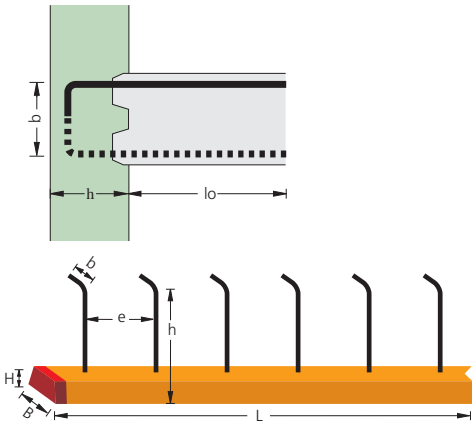
up to 43%
with R1 burl film
cover

up to 68%
with R2 burl film
cover

up to 80%
with E1 burl film
cover

Do not hesitate to ask for the test
report by the Dortmund university.

Quick-BRA...-A...

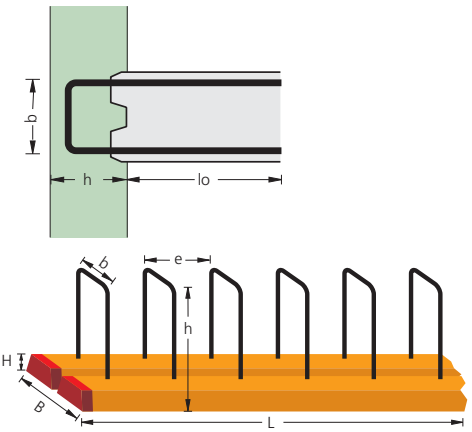


For optional wall connection widths

Item No.	Type	Ø mm	e cm	h cm	b cm	lo cm	B mm	H mm	Pallet unit m	Pallet cage unit m	Weight kg/m
22542	BRA 5-A- 8/15	8	15	15	6	28	50	25	200	200	1.80
22545	BRA 8-A- 10/10	10	10	15	8	36	75	30	200	150	3.40
22546	BRA 8-A- 10/15	10	15	15	8	36	75	30	200	150	3.00
22549	BRA 10-A-12/10	12	10	15	11	43	100	35	200	100	4.90
22550	BRA 10-A-12/15	12	15	15	11	43	100	35	200	100	4.20
22553	other lengths up to 4.80 m										

standard lengths 1.25 m

Quick-BRA...-B...



For a 15 cm wall connection width

Item No.	Type	Ø mm	e cm	h cm	b cm	lo cm	B mm	H mm	Pallet unit m	Pallet cage unit m	Weight kg/m
24510	BRA 15-B-8/15	8	15	15	7	28	100	35	100	60	3.60
24513	BRA 15-B-10/10	10	10	15	7	36	100	35	100	60	6.00
24514	BRA 15-B-10/15	10	15	15	7	36	100	35	100	60	5.50
24517	other lengths up to 4.80 m										

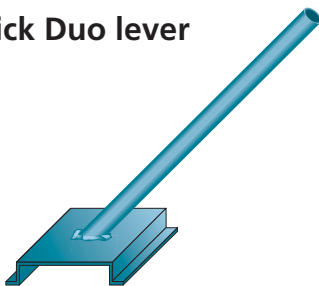
standard lengths 1.25 m

For a 20 cm wall connection width

Item No.	Type	Ø mm	e cm	h cm	b cm	lo cm	B mm	H mm	Pallet unit m	Pallet cage unit m	Weight kg/m
24518	BRA 20-B-8/15	8	15	15	12	28	150	25	120	45	3.80
24521	BRA 20-B-10/10	10	10	15	12	36	150	30	120	45	6.20
24522	BRA 20-B-10/15	10	15	15	12	36	150	30	120	45	5.70
24525	BRA 20-B-12/10	12	10	15	12	43	150	35	120	45	9.60
24526	BRA 20-B-12/15	12	15	15	12	43	150	35	120	45	8.20
24529	other lengths up to 4.80 m										

standard lengths 1.25 m

Quick Duo lever



- for a quick removal of the profiles
- for straight back-bending of the reinforcement

For a 25 cm (24) wall connection width

Item No.	Type	Ø mm	e cm	h cm	b cm	lo cm	B mm	H mm	Pallet unit m	Pallet cage unit m	Weight kg/m
24530	BRA 25-B-8/15	8	15	15	17	28	200	25	90	40	4.00
24533	BRA 25-B-10/10	10	10	15	17	36	200	30	90	40	6.50
24534	BRA 25-B-10/15	10	15	15	17	36	200	30	90	40	6.00
24537	BRA 25-B-12/10	12	10	15	17	43	200	35	90	40	10.20
24538	BRA 25-B-12/15	12	15	15	17	43	200	35	90	40	8.80
24541	other lengths up to 4.80 m										

standard lengths 1.25 m

For a 30 cm wall connection width

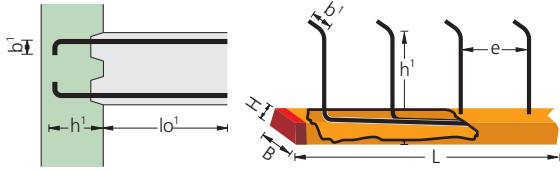
Item No.	Type	Ø mm	e cm	h cm	b cm	lo cm	B mm	H mm	Pallet unit m	Pallet cage unit m	Weight kg/m
24542	BRA 30-B-8/15	8	15	15	22	28	250	25	60	30	4.20
24545	BRA 30-B-10/10	10	10	15	22	36	250	30	60	30	6.90
24546	BRA 30-B-10/15	10	15	15	22	36	250	30	60	30	6.30
24549	BRA 30-B-12/10	12	10	15	22	43	250	35	60	30	10.00
24550	BRA 30-B-12/15	12	15	15	22	43	250	35	60	30	9.40
24553	other lengths up to 4.80 m										

standard lengths 1.25 m

Element length	Stirrup spacing
0,85 m	e = 10
1,25 m	e = 15
2,50 m	e = 20
	e = 25
User-defined length up to 5 m	e = 30

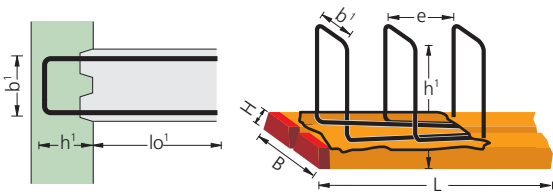
Quick BRA – User-defined product range

Quick BRA-A- (stirrup shape A)

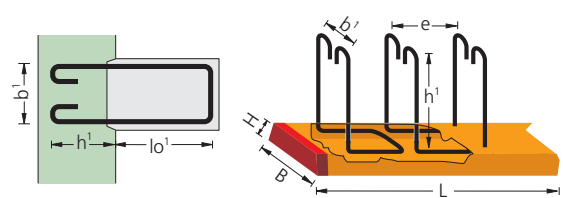


Optional **stirrup lengths, spacing and element lengths** possible

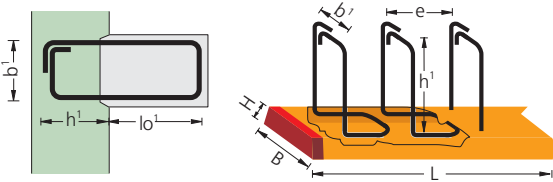
Quick BRA-B- (stirrup shape B)



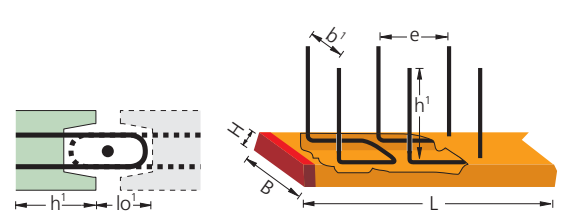
Quick BRA-C- (stirrup shape C)



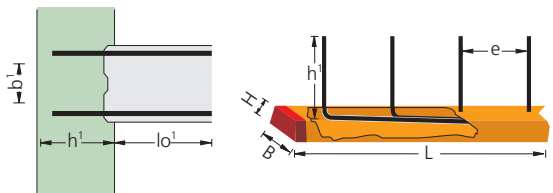
Quick BRA-E- (stirrup shape E)



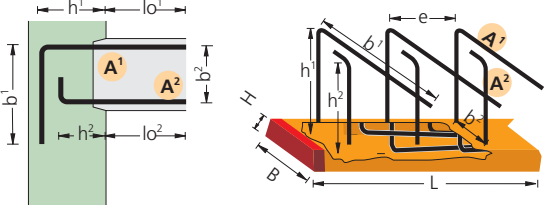
Quick BRA-F- (stirrup shape F)
pre-fabricated component connection



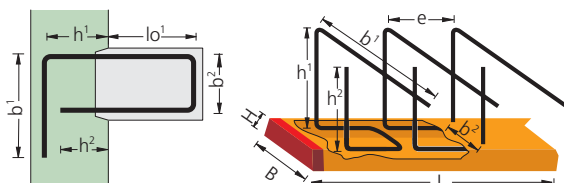
Quick BRA-W- (stirrup shape W)
Slab and wall connection



Quick BRA-A1/A2- (2x stirrup shape A)
torsion-free slab connection



Quick BRA-N (stirrup shape N)
torsion-free bracket connection

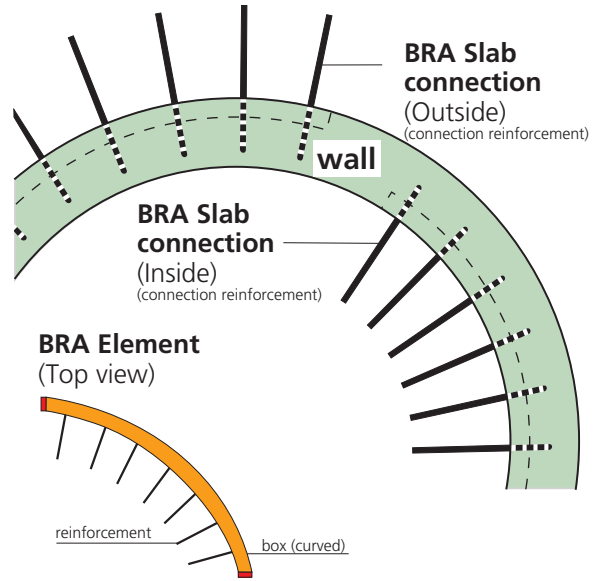


Quick BRA – User-defined product range

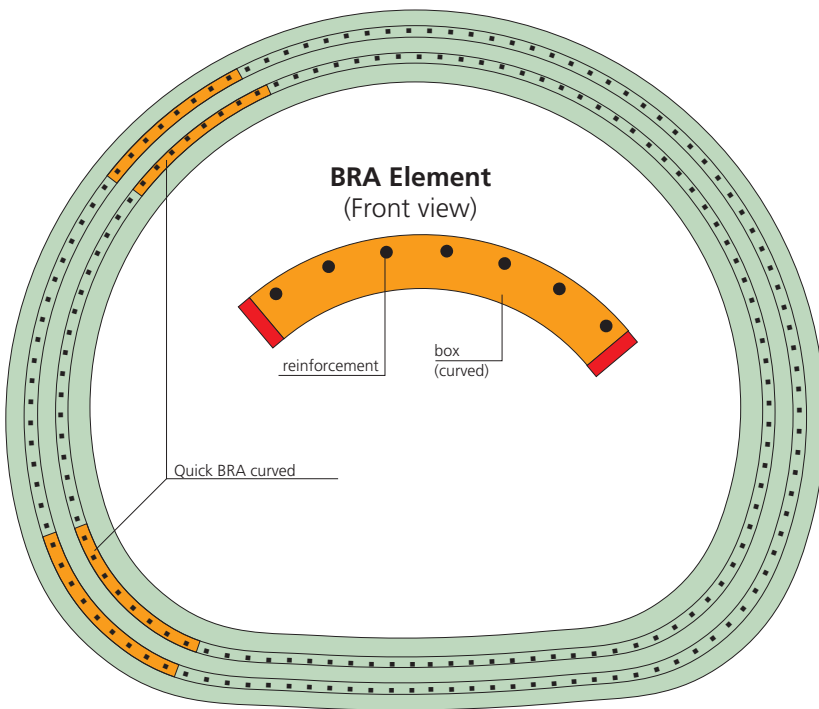
Curved reinforcement connection

- for round structures
- for optional radiusses

Structural and industrial engineering



Tunnel and gallery construction



Bidding text	Unit €	Total €
Quick BRA back-bending joint BST 500 S structural steel to be delivered and fitted in compliance with DIN and the manufacturers' instructions. The box is completely removed to avoid hollow spaces and to ensure a statically secure "concrete to concrete" bond.		

The choice is up to you!

- stirrup form
- stirrup length
- element lengths
- radiusses

Table for user-defined types

Item No.								
		BRA-	BRA-	BRA-	BRA-	BRA-	BRA-	BRA-
Dimensions in	Type (stirrup shape)							
mm	∅							
	e							
	h ¹							
	h ²							
	b ¹							
	b ²							
	l _o ¹							
	l _o ²							
	B							
	L							
	Radius							
m	Inside joint							
	Outside joint							
—	Pcs							

We reserve the right to make technical alterations.

