

ENVIRONMENTAL REPORT 2020



COMPANY DESCRIPTION

Quick Bauprodukte GmbH is a medium-sized family business, located in Schwerte, in the heart of the Ruhr area in Germany. The company was founded in 1982 by Heinz von Döllen.

Today Andreas von Döllen manages the company in second generation. Then as now, the company impresses with its innovative product development.

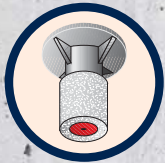
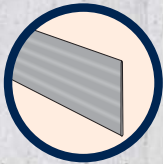
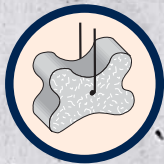
The founder invented the first reinforcement back-bending connection "Quick Schiene", which is now established worldwide and state-of-the-art.



The company continued to develop on this foundation.

We supply our partners in whole Europe.

BUSINESS AREAS AND PRODUCT PORTFOLIO



Our products are suitable for use in the following areas: Construction, civil engineering, bridge construction, tunnelling, special foundation engineering, and precast concrete industry.

The portfolio includes products and services such as

- building accessories (formwork and reinforcement accessories)
- building sealings
- supporting structures (parapets and superstructure) and fall protection for the construction industry.



INNOVATIONS

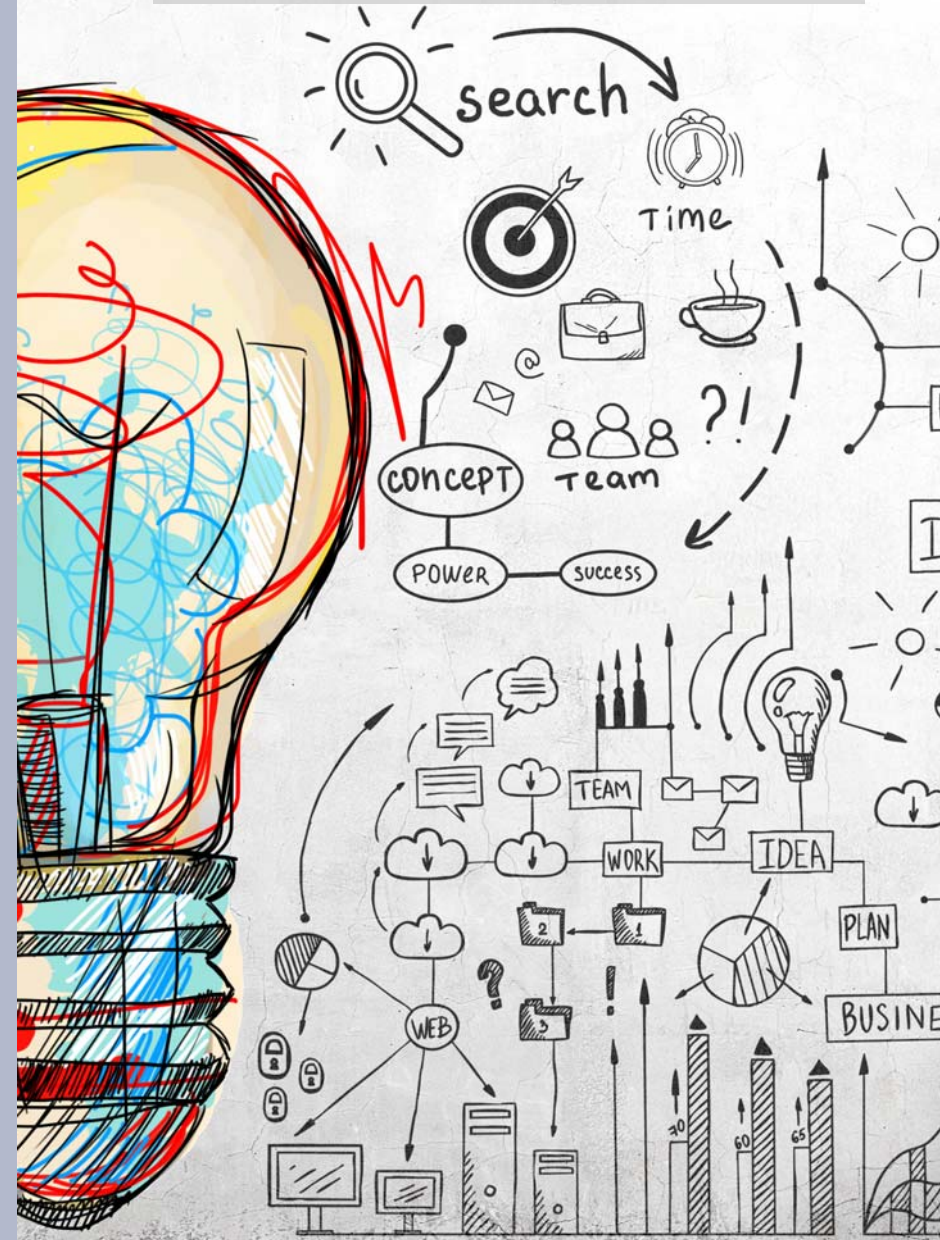


System Safe

With more than 60 highly motivated employees and innovative products, we are able to meet complex customer requirements at competitive prices within the shortest possible time.

Through continual investments in machinery and equipment, we are constantly able to adapt to the changing requirements of our customers and process the orders on time. Regular training of our employees proves our high quality standard and sets us apart from competitors.

For our customers, we are the reliable partner for implementing projects together.





OUR ENVIRONMENTAL POLICY

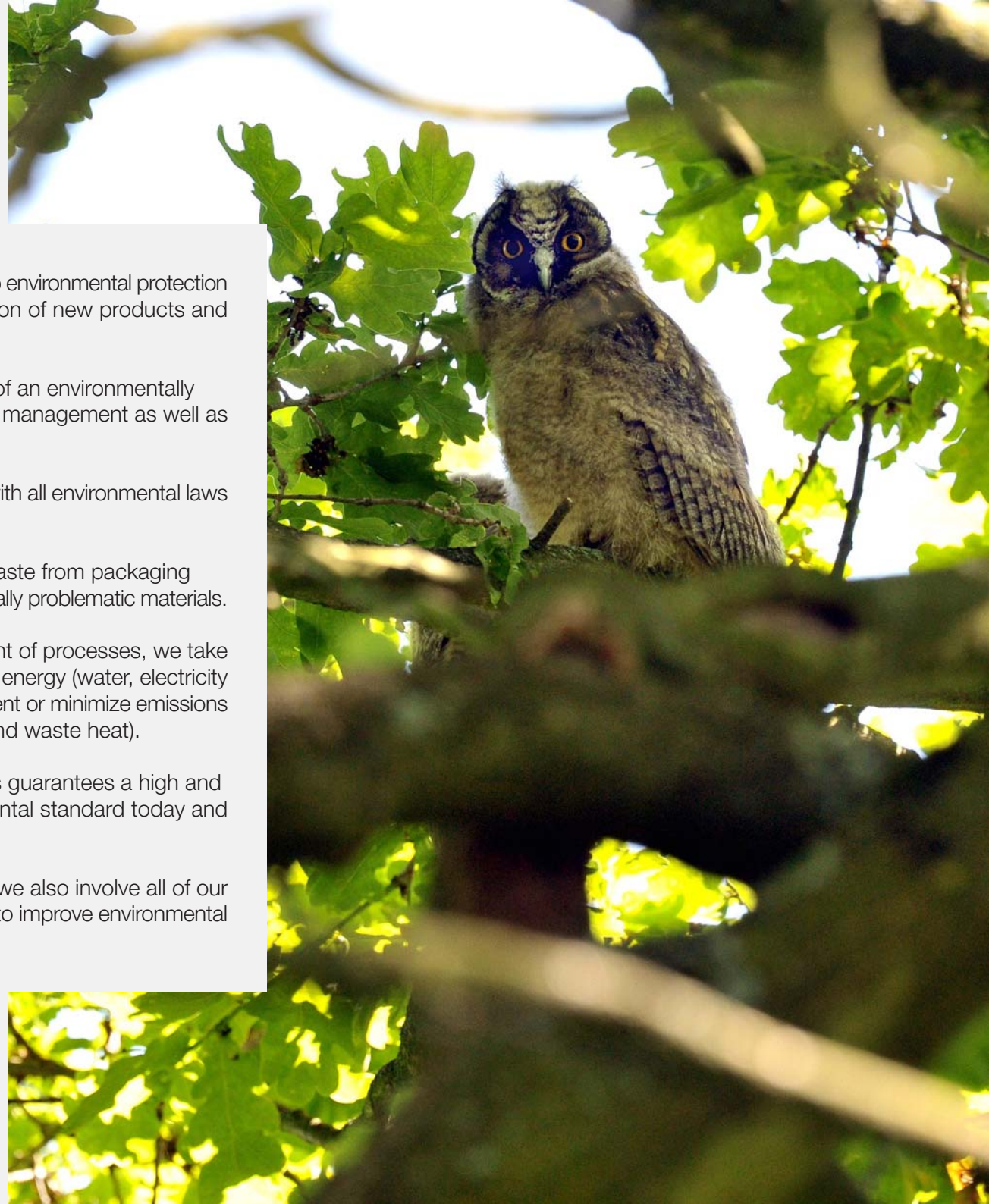
Maintaining our environment and the livelihoods of future generations, protection of jobs and constantly improving working conditions are particular concerns for us.

The necessary principles are developed and implemented together with all employees. We are convinced that an active environmental policy will help to strengthen our economic situation.

Our efforts to achieve the best possible and continuous improvement of environmental protection are supported by the following principles:



- We attribute great importance to environmental protection in development and introduction of new products and processes.
- We underline the importance of an environmentally conscious commitment of the management as well as our employees.
- We are committed to comply with all environmental laws and regulations.
- We minimize the amount of waste from packaging material and avoid environmentally problematic materials.
- Through intelligent arrangement of processes, we take all necessary measures to use energy (water, electricity and gas) sparingly, and to prevent or minimize emissions (wastewater, exhaust gases and waste heat).
- The way we align our activities guarantees a high and constantly evolving environmental standard today and in the future.
- In addition to our employees, we also involve all of our contract partners in the efforts to improve environmental protection measures.

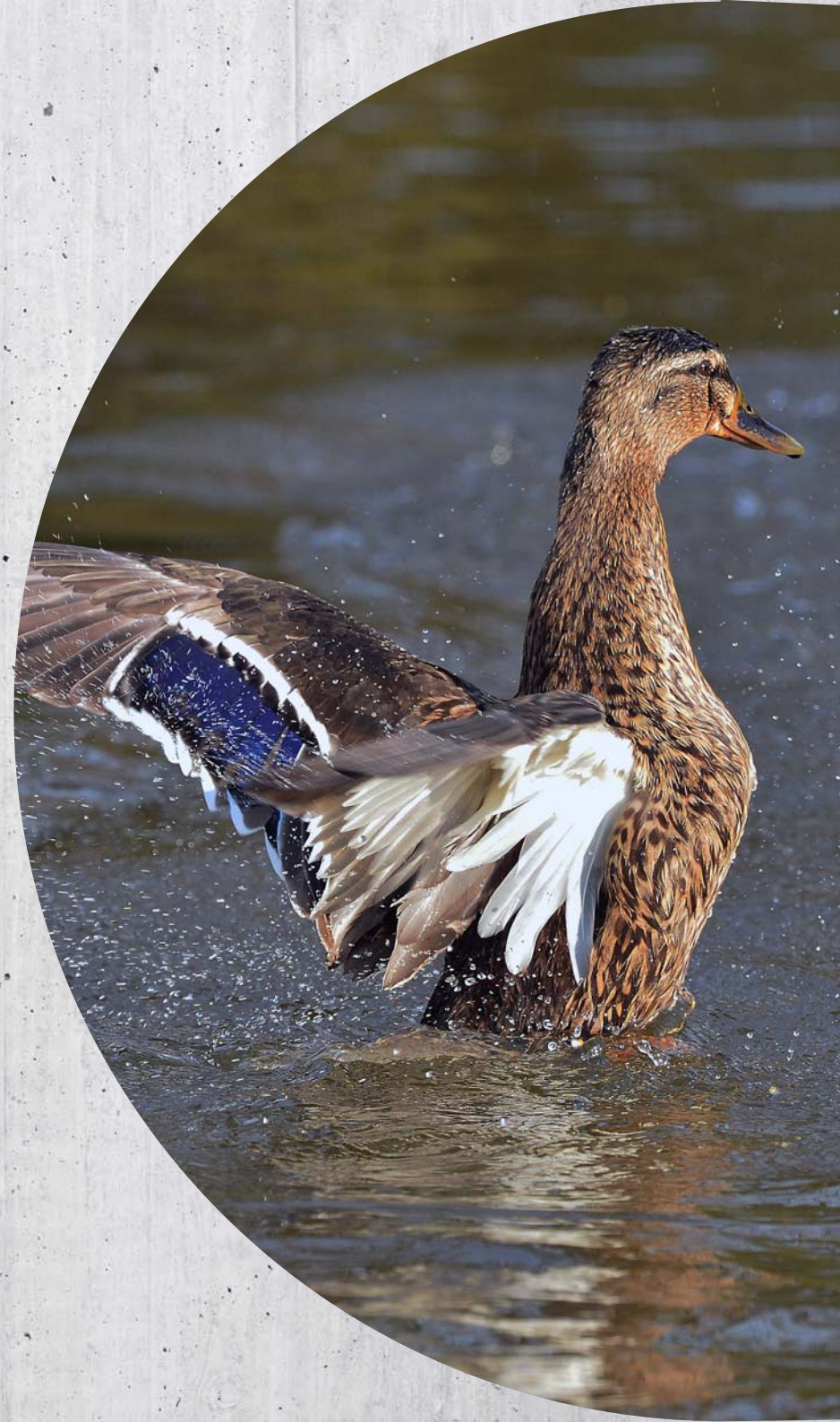


OUR ENVIRONMENTAL TARGETS FOR THE YEAR 2021



In order to continuously improve our performance in environmental protection, we set ourselves new objectives every year.

- Energy saving through more energy-efficient lighting.
- Waste reduction due to less packaging.
- Reduction of concrete residues.
- Use of reusable pallets (euro pallets and pallet cages).
- Digitisation of sales work to reduce travel paths to customers.



OUR INPUT / OUTPUT STATEMENT 2020

These are our key figures for electricity, heat energy, water, residual waste, and CO₂ emissions:

INPUT

Electricity (kWh)	138.890
Gas (kWh)	13.395
Diesel (l)	5.311
Petrol (l)	612
Water (m ³)	1.029

OUTPUT

CO ₂ from electricity	55.695
CO ₂ from gas	2.947
CO ₂ from diesel	3.809
CO ₂ from petrol	1.408
Waste water (m ³)	395

Waste

Residual waste (l)	12.500
Paper / cardboard (l)	16.200
Foil (l)	8.750
Concrete residues (m ³)	85





IMPRINT

Quick Bauprodukte Gesellschaft mit beschränkter Haftung
Westendamm 3
58239 Schwerte

Kontakt:

Tel.: +49 (0) 2304 98143-10

Fax: +49 (0) 2304 98143-22

E-Mail: info@quick-bauprodukte.de

www.quick-bauprodukte.de

Changes and errors excepted.

Published on: 22.12.2020