

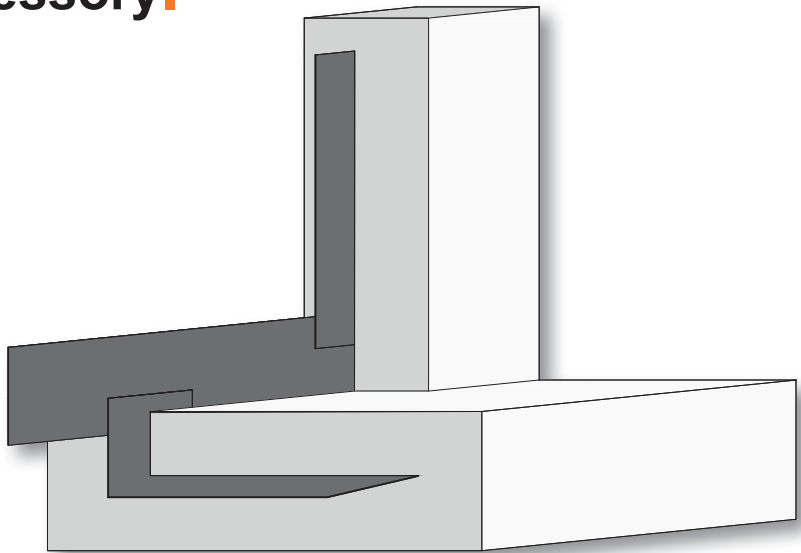


Quick-construction waterproofing

Seam sheet WU-B.

Grouting hose.

Swelling tapes + accessory.




QUICK
BAUPRODUKTE

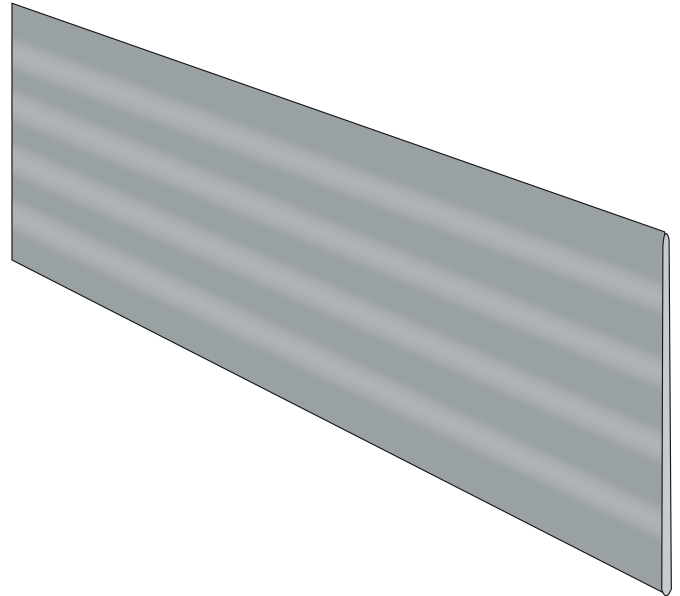
Quick WU-B active

Quick has been developing technical products for the construction industry for 40 years.

The basic idea is to optimize and speed up work processes on construction sites. Naturally, we also set new standards in terms of quality.

Due to ever shorter planned construction times and high construction costs as well as the decline in well-trained skilled workers, it is now more important than ever to develop products that can be processed quickly, safely and rationally.

It is just as important to conserve resources and to produce in an environmentally conscious manner - both we as manufacturers and the building contractors.



Quick-WU-B active

Galvanized sheet with special mineral coating on both sides.

Dimension 150 x 0.75 mm, single sheet length 2,000 mm

Advantages

- **ETA approval by DIBT and drinking-water tested by the Hygiene Institute**
- **Active sealing**
 - Crystallization
 - Active mineralization
 - Chemical bond
- **No risk of premature destructive activation (by rain)**
 - Crystallization starts with moisture - no damage occurs
- **UV resistant**
- **Independent of temperature and weather**
- **No joint bonding required**
 - The joint seals actively through crystallization and sintering
- **No protective film required**
 - Concrete splashes are actively crystallized/mineralized and are therefore not weak points
- **Tested tight up to 8 bar**
- **Approval of drinking water**
- **Slurry-resistant**
- **Minimum concrete insertion depth ≥ 3 cm**
- **Joint overlap ≥ 5 cm**
- **Joint connection either with the omega bracket or the joint clamp**



Advantages at a glance

**Drinking-water
tested**

Active sealing

**No protective
film required**


UV resistant

**ETA
approval**

**Without joint
bonding**

**Independent
of temperature
and weather**

Approval and testing




Deutsches Institut für Bautechnik


Approval body for construction products and types of construction

Bautechnisches Prüfamt

An institution established by the Federal and Lander Governments



Member of
ETA
www.eota.eu



Designated according to Article 29 of Regulation (EU) No 305/2011 and member of EOTA (European Organisation for Technical Assessment)

European Technical Assessment

ETA-18/0828
of 21 November 2018

English translation prepared by DIBt - Original version in German language

General Part

Technical Assessment Body issuing the European Technical Assessment: Trade name of the construction product Product family to which the construction product belongs Manufacturer Manufacturing plant This European Technical Assessment contains This European Technical Assessment is issued in accordance with Regulation (EU) No 305/2011, on the basis of	Deutsches Institut für Bautechnik QUICK WU-B aktiv Coated metal water stop sheet for construction and controlled crack joints in waterproof concrete Quick Bauprodukte GmbH Westendamm 3 58239 Schwerte DEUTSCHLAND Manufacturing plant 8239 8 pages including 4 annexes which form an integral part of this assessment EAD 320002-02-0605
--	---

Deutsches Institut für Bautechnik
 Kolonnenstraße 30 B | 10829 Berlin | GERMANY | Phone: +49 30 78730-0 | Fax: +49 30 78730-320 | Email: d




Hygiene-Institut des Ruhrgebiets

Institut für Umwelthygiene und Toxikologie
 Direktor: Prof. Dr. rer. nat. L. Dunemann
 Träger: Verein zur Bekämpfung der Volkskrankheiten im Ruhrkohlengebiet e.V.

HYGIENE-INSTITUT - Postfach 10 12 55 - 45812 Gelsenkirchen / GERMANY

Quick Bauprodukte GmbH
 Westendamm 3
 58239 Schwerte



Visitor's/Parcel Address:
 Rotthausen Str. 21
 45879 Gelsenkirchen

Telephone +49 (0) 209 9242-0
 Extension +49 (0) 209 9242-210
 Telefax +49 (0) 209 9242-212
 E-Mail a.koch@hyg.de
 Internet www.hyg.de

Reference No.: K-303475-18-Ko
 Contact person: Dr. Andreas Koch
 Prolongation: K-303474-18-Ko
 Gelsenkirchen, 21.09.2018

TEST CERTIFICATE
 according to the DVGW Code of Practice W 347
 "hygienic requirements for cement-bound
 materials for drinking water supply"
 (issue date 2006-05)

Product: QUICK WU-B aktiv

Test Specimen: all side coated metal sheets (grey)

Test result:
 The test specimen meets the requirements of the DVGW Code of Practice W 347 according to the test report no.: K-221120-12-Ko dated 20.09.2012 for the following scopes:


Scope	Products / Components	Assessment
I	mortar lining of cast iron pipes and steel pipes	---
II	concrete pipes ≥ DN 300, reservoirs, cementitious coatings of reservoirs	---
III	cement for tiles, joint filler, coating of fittings (e.g. for welding joints)	passed
IV	concrete components in protective areas of drinking water plants I, II, III	passed

as far as the material is qualified technically.

This test certificate is valid beginning with the date of issue and is ending by 20.09.2022 as far as there are no changes in the formula.

The Director of the Hygiene-Institute
 on behalf of

Dr. rer. nat. Andreas Koch
 Head of the Dept. for water
 hygienic material testings



The assessment was based on the assumption that the used starting substances and monomers used to manufacture the product may completely known and no other substances are present in the product. The validity of this document expires in case of modifications in the composition of the product or the processing conditions. The results and evaluations refer to the groups of test items. This document may not be published without our written permission only complete and unchanged or duplicated.

Träger: Verein zur Bekämpfung der Volkskrankheiten im Ruhrkohlengebiet e.V., Vereinsregister: VR 519 Amtsgericht Gelsenkirchen, USt-ID: DE125018356
 Vorstand: Prof. Dr. Werner Schlake (Vors.), Prof. Dr. Jürgen Kretschmann, Dr. Emanuel Grün, Dr. Dirk Walder, Prof. Dr. Lothar Dunemann (geschäftsf. Vorstand)

How WU-B seals „actively“ in a safe and permanent manner

The „active“ sealing process of the WU-B seam sheet is triggered by the reaction of the various ingredients in the patented special coating in combination or contact with the constituents of the concrete. The crystallisation penetrates deep into the capillary system of the concrete through the active process of osmosis. The combination of different ingredients creates microfine crystallisation or sintering in the structure of the concrete building structure, which seals capillaries and shrinkage cracks securely and permanently, even displacing moisture.

This process takes place both on the side under water pressure and on the side away from water pressure. Without moisture, the components of the special coating are not active. Should they come into contact with moisture again at some point, the chemical reaction starts automatically along with the sealing process.

- WU-B is an „active“ sealing sheet with international patent protection.



Particles of the sheet coating



Particles of the sheet coating under the influence of water



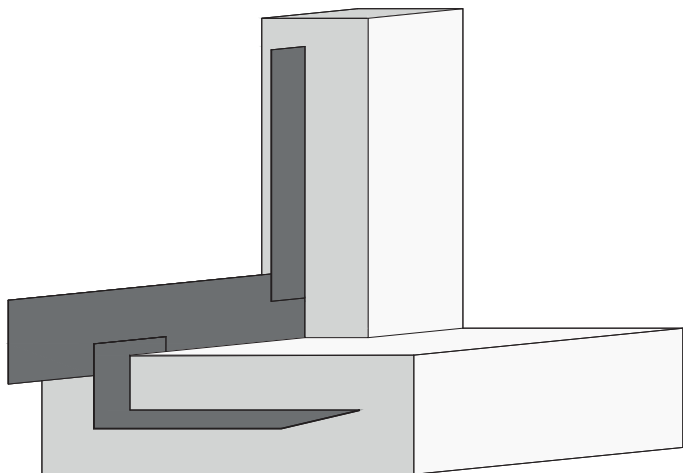
Pointed needle-like primary crystallites form a fibrous coating on the particles of the special coating, allowing to actively displace the water.

Installation example

- Labyrinth seal and swelling
- Crystallization seal „active“
- Promotion of sintering through limestone formation „active“
- Unique bond due to the structure of the special coating
- General test certificate from the building authorities (abP) is available

Insert the WU-B seam sheet actively with coating on both sides centrally in the joint and fix with the Q bracket. Joints are to be overlapped by only 5 cm. These are to be fixed with the joint clamp and actively self-seal. No joint bonding and no annoying film peeling.

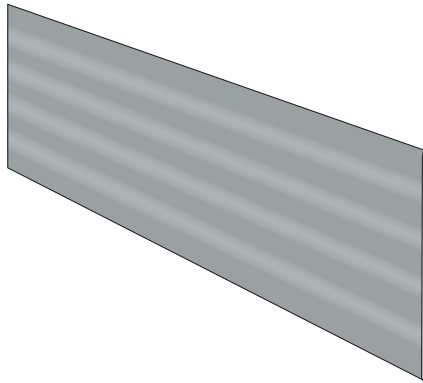
Storage: Always store in a dry place. For curves and corners, simply bend the seam sheet into the appropriate shape.



Product overview

WU-B active seam sheet

Item no.	Type	Dimensions mm	m / PU	Weight (kg/PU)
15660	WU-B active seam sheet	2,000 x 150 x 1.25	100	125.00



WU-B active accessory

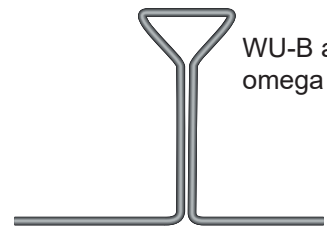
Item no.	Type	Requirement	Item / PU	Weight (kg/PU)
15664	WU-B active joint clamp	1 item / sheet	100	0.70
15663	WU-B active omega bracket	2 item / sheet	100	10.00
15661	WU-B active holder	2 item / sheet	100	10.20
15665	WU-B active bracket for cavity walls	2 item / sheet	100	5.50
15666	WU-B active clamping plate	1 item per joint	1	0.41



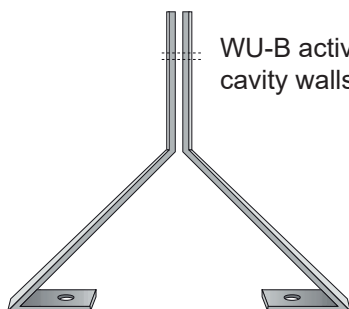
WU-B active joint clamp



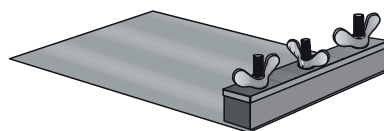
WU-B active holder



WU-B active omega bracket



WU-B active bracket for cavity walls



WU-B active clamping plate

Uncoated seam sheet

Item no.	Type	Dimensions mm	m / roll	Weight (kg/PU)
15671	Steel seam sheet, black	1.5 x 250	30	90.00
15672	Steel seam sheet, black	1.5 x 300	30	108.00
15673	Steel seam sheet, black	2.0 x 250	30	120.00
15674	Steel seam sheet, black	2.0 x 300	30	144.00

15675	Steel seam sheet, galvanized	1.5 x 250	30	90.00
15676	Steel seam sheet, galvanized	1.5 x 300	30	108.00
15677	Steel seam sheet, galvanized	2.0 x 250	30	120.00
15678	Steel seam sheet, galvanized	2.0 x 300	30	144.00



**Quick building
products**

**Innovative
solutions**

**WU-B active
seam sheet**

Injection hoses

Injection hose

IS 1 = 06/11 mm, **easy** to grout

Grouting media: PU resin, PU foam resin, EP resin, acrylate

Maximum grouting length: 10 m



IS 2 = 06/11 mm, **repeatedly** groutable

Grouting media: PU resin, PU foam resin, EP resin, acrylate, cement paste, fine cement

Maximum grouting length: 12 - 15 m



IS 3 = 11/19 mm, repeatedly groutable

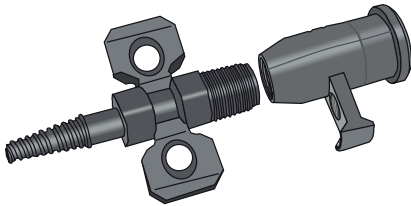
Grouting media: PU resin, PU foam resin, EP resin, acrylate, cement paste, fine cement

Maximum grouting length: 12 - 15 m

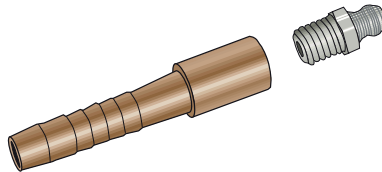


Hose ends

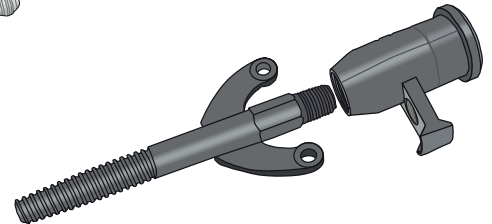
Grouting end 11 mm



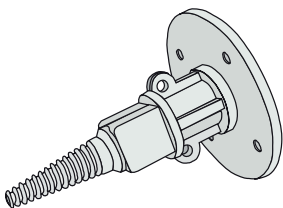
Grouting nipple 11 mm



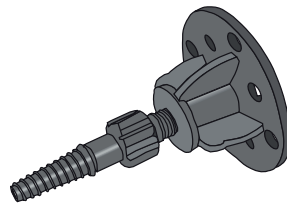
Grouting nipple 19 mm



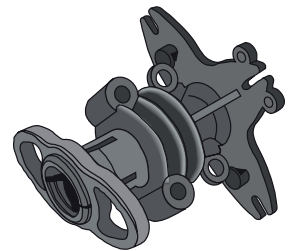
Formwork packer M6 one-piece



Formwork packer M8 two-piece



Super packer M8 one-piece



Injection agents

Cement-containing injection agents (as per ZTV-Ing, Part 3, Section 5 and associated TL/TP FG-ZL/ZS) for grouting gaps and cavities:

- **ZCement suspension (ZS)** for gap widths > approx. 0.25 mm
- **Cement paste (ZL)** for gap widths > approx. 0.80 mm
- **Cement mortar** for larger cavities (e.g. backfilling wet-on-wet following the concreting process)

Plastic injection agents for grouting gaps with widths smaller than approx. 0.25 mm or for eliminating leaks:

- **AAcrylic gels: 0.10 mm** > gap widths < 0.25 mm (Attention: corrosion behaviour)
- **Synthetic resins: 0.20 mm** > gap widths < 0.25 mm Polyurethanes (PUR) (as per ZTV-ING, Part 3, Section 5 and associated TL/TP FG-PUR)

Product overview

Injection hose IS 1 (material W-PVC / colour blue)

Item no.	Type	Inner Ø mm	Outer Ø mm	Max. grouting length m	m / roll	Weight (kg/m)
13653	IS 1	6	11	10	50	0.12

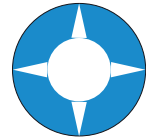
Grouting media: PU resin (crack seal), PU foam resin, EP resin, acrylate*

Openings: Every 12-14 mm in cross-axis arrangement (size 3-5 mm)

Number of injections: resins: single, gels repeatedly

Labelling: control numbers

*Only if the acrylate has no corrosion-promoting properties



Injection hose IS 2 (material PVC / colour green)

Item no.	Type	Inner Ø mm	Outer Ø mm	Max. grouting length m	m / roll	Weight (kg/m)
13654	IS 2	6	11	12-15	100	0.11

Grouting media: PU resin (crack seal), PU foam resin, EP resin, acrylate*, cement paste, fine cement

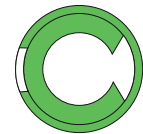
Openings in inner hose: every 20 mm extended by 90°
- results in 60 openings per 1 metre

Openings in outer hose: 5 mm

Number of injections: multiple

Labelling: control numbers and metre marking

*Only if the acrylate has no corrosion-promoting properties



Injection hose IS 3 (material PVC / colour green)

Item no.	Type	Inner Ø mm	Outer Ø mm	Max. grouting length m	m / roll	Weight (kg/m)
13655	IS 3	11	19	12-15	100	0.25

Grouting media: PU resin (crack seal), PU foam resin, EP resin, acrylate*, cement paste, fine cement

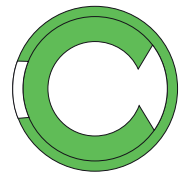
Openings in inner hose: every 20 mm extended by 90°
- results in 60 openings per 1 metre

Openings in outer hose: 10 mm

Number of injections: multiple

Labelling: control numbers and metre marking

*Only if the acrylate has no corrosion-promoting properties



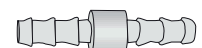
LS ventilation hose

Item no.	Type	Inner Ø mm	m / roll	Weight (kg/m)
13663	LS DN 11 transparent	11	50	0.10
136631	LS DN 11 red	11	50	0.10
136632	LS DN 19 transparent	19	50	0.18



KVS hose connector

Item no.	Type	Outer Ø mm	Item / PU	Weight (kg/PU)
13658	KSV DN 11	11	100	0.216
136581	KSV DN 19	19	100	0.670



Sealing plug

Item no.	Type	Size mm	Item / PU	Weight (kg/PU)
13662	Sealing plug DN 11	11	500	0.12
136621	Sealing plug DN 19	19	500	0.12



Hose clamp

Item no.	Type	Size mm	Item / PU	Weight (kg/PU)
13656	Hose clamp DN 11	11	100	1.60
136561	Hose clamp DN 19	19	100	1.60



(Recommended distance: 15 cm)

Item no.	Type	Size mm	Item / PU	Weight (kg/PU)
13661	Plastic clip DN 11	11	100	0.20
136611	Plastic clip DN 19	19	100	0.20



DN11



DN19

(For drill hole Ø: 5 mm, recommended distance: 15 cm)

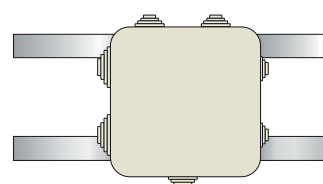
Hose clamp

Item no.	Type	Size mm	Item / PU	Weight (kg/PU)
13676	SK DN 11	11	100	0.30
136761	SK DN 19	19	100	0.30



Custody box

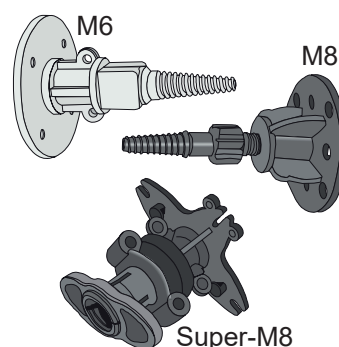
Item no.	Type	Item / PU	Weight (kg/PU)
13664	Custody box	42	5.50
15624	Foam tape (10 m length x 19 mm width x 6 mm thickness, 20 items / box)		



Formwork packer

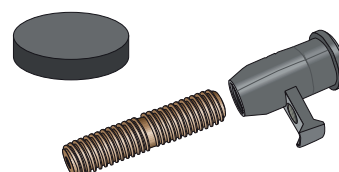
Item no.	Type	Size mm	Item / PU	Weight (kg/PU)
13657	Formwork packer 1-part M6	11	100	1.40
136571	Formwork packer 2-part M8	11	100	1.40
136572	Super formwork packer M8	11	100	1.03

(including injection nipple)



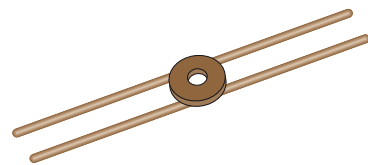
Super-M8

Item no.	Type	Item / PU	Weight (kg/PU)
13672	Foam rubber sheet, black	100	0.30
136574	Extension tube for formwork packer M8	100	-
136573	Closing piece for formwork packer M8	100	1.85



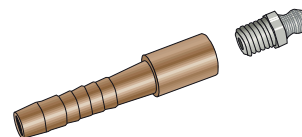
Reinforcement holder

Item no.	Type	Item / PU	Weight (kg/PU)
13673	Reinforcement holder, simple	250	19.50
136731	Reinforcement holder, double	250	19.50



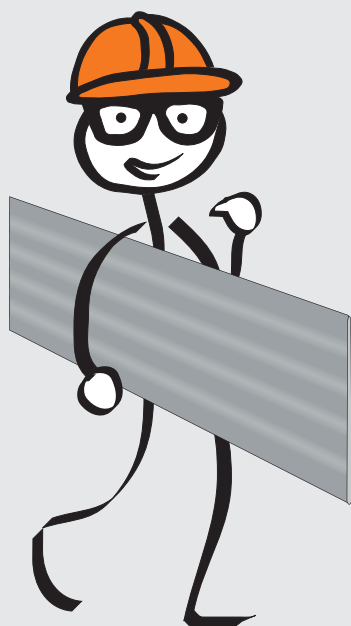
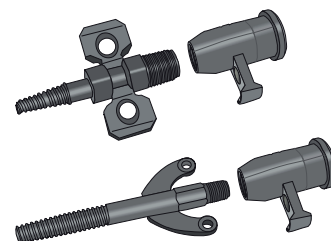
Grouting nipple

Item no.	Type	Outer Ø mm	Item / PU	Weight (kg/PU)
13674	Grouting nipple complete M6 including nipple	11	100	1.50



Grouting ends

Item no.	Type	Outer Ø mm	Item / PU	Weight (kg/PU)
13675	VE DN 11	11	50	1.75
136751	VE DN 19	19	50	1.85

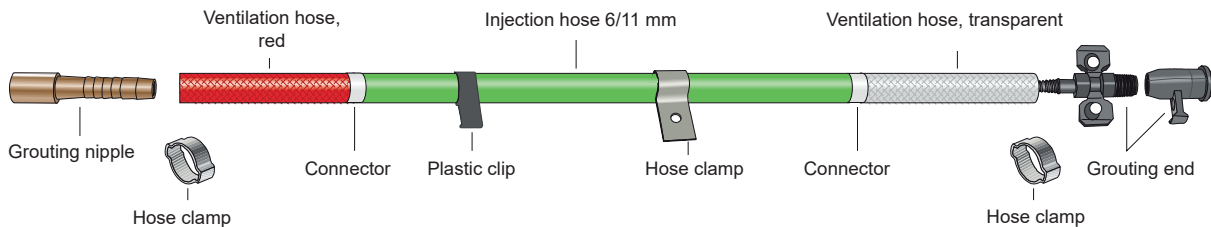


Our name stands for service,
advice, development
and delivery!

Hose ends outside the concreting

Injektion hose IS 2 = 06/11mm

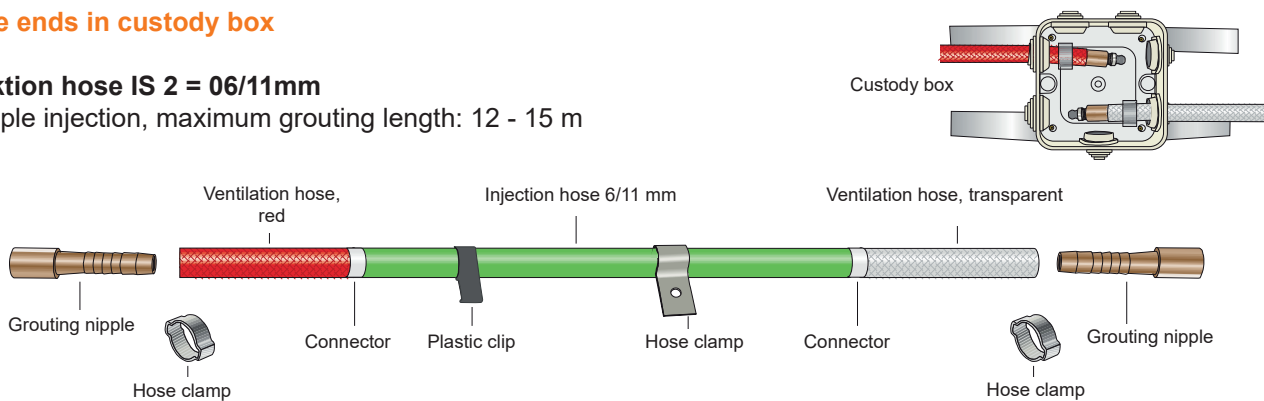
Multiple injection, maximum grouting length: 12 - 15 m



Hose ends in custody box

Injektion hose IS 2 = 06/11mm

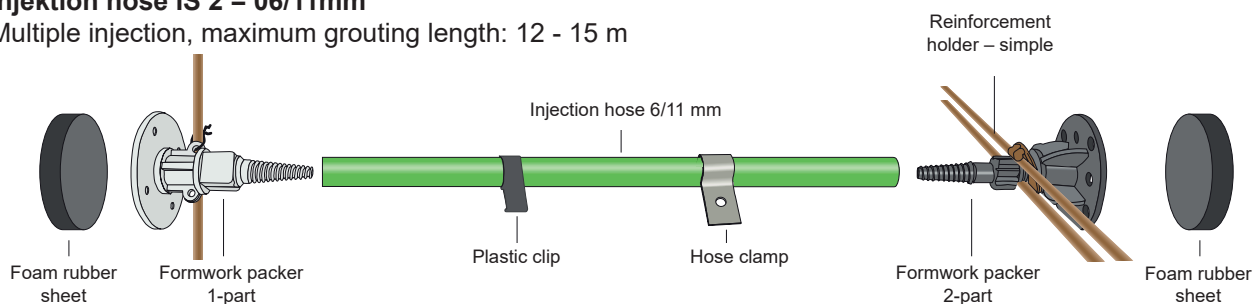
Multiple injection, maximum grouting length: 12 - 15 m



Hose ends fixed to reinforcement

Injektion hose IS 2 = 06/11mm

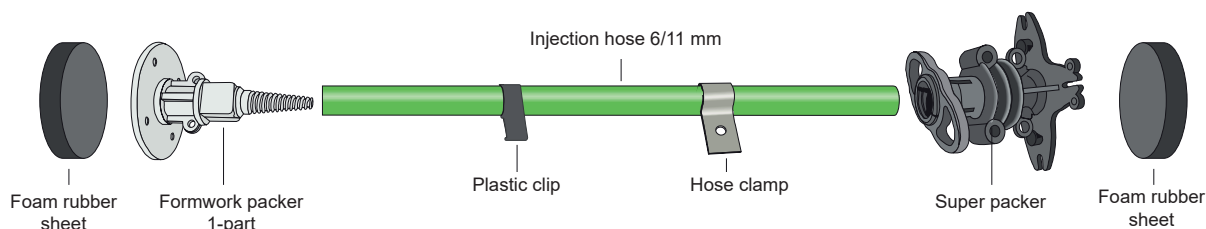
Multiple injection, maximum grouting length: 12 - 15 m



Hose ends fixed to formwork

Injektion hose IS 2 = 06/11mm

Multiple injection, maximum grouting length: 12 - 15 m

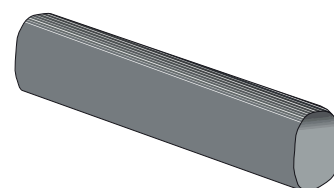


Joint tapes

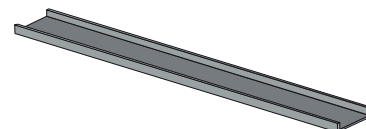
Betonit swelling tape

Type	Coating	Rain protection	Sealing via	Swelling capacity
BQ	Talc-coated	-	Swelling	> 300%
BQR	Rain protection coating	2 - 3 days	Swelling	> 500%
BQR2	Rain protection coating	2 - 3 days	Swelling + sintering	> 300%

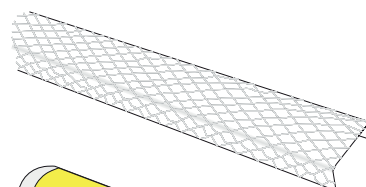
Item no.	Type	Dimension mm	m / PU	Weight (kg/m)
13647	Betonit swelling tape BQ	10 x 20	50	0.32
13646	Betonit swelling tape BQ	16 x 21	20	0.61
13648	Betonit swelling tape BQ	18 x 24	30	0.70
136471	Betonit swelling tape Plus BQR	16 x 21	20	0.62
136481	Betonit swelling tape Plus BQR	18 x 24	30	0.78
136472	Betonit swelling tape Plus 2-phase BQR2	16 x 21	20	0.62
136482	Betonit swelling tape Plus 2-phase BQR2	18 x 24	30	0.78



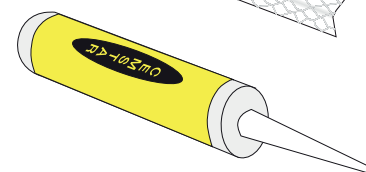
Item no.	Type	Length m	m / PU	Weight (kg/m)
13650	Holding rail	1	20	0.225



Item no.	Type	Length m	m / PU	Weight (kg/m)
13649	Fixing grid	1	20	0.065



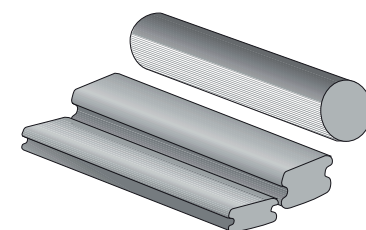
Item no.	Type	Cartridge content/ml	Items / PU	Gewicht (kg/Stk.)
13652	CEMSTAR adhesive	300	20	0,3



Swelling rubber

Item no.	Type	Dimension mm	m / Rolle	m / VPE	Weight (kg/m)
13642	Swelling rubber CEMswell, angular	18 x 7	12	72	0.16
13643	Swelling rubber CEMswell, angular	23 x 15	6	30	0.40
13644	Swelling rubber CEMswell, round	23	5	20	0.57

(swelling capacity > 400%; minimum concrete cover: 8 - 10 cm)

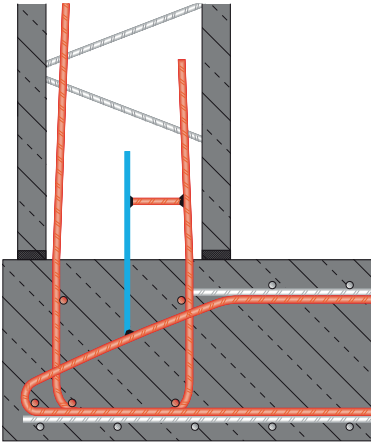


Item no.	Type	ml	Stk / VPE	Gewicht (kg/Stk.)
13645	PU adhesive CEM 805 „active“	310 ml	12	0.51

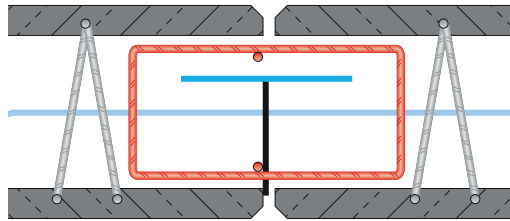
Other systems for construction waterproofing

SOS-BF, cavity wall system (reinforcement with seam sheet)

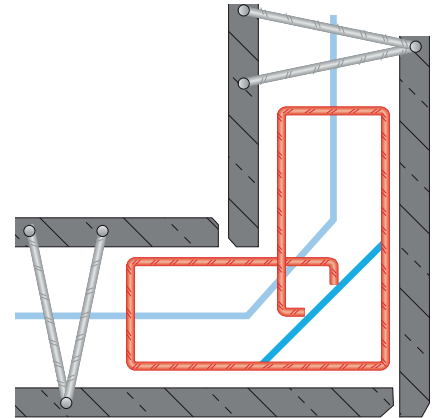
SOS-BF (horizontal)



SOS-BF--V (vertical)

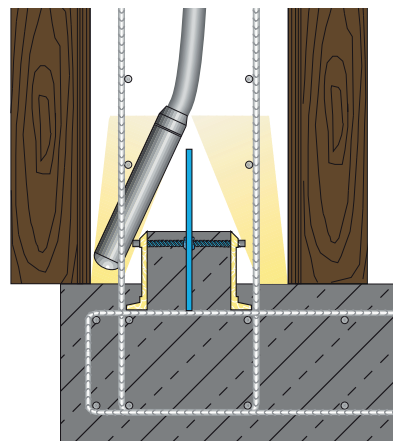
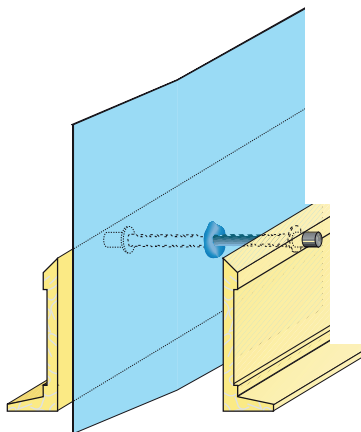


SOS-BF--V/E (vertical)



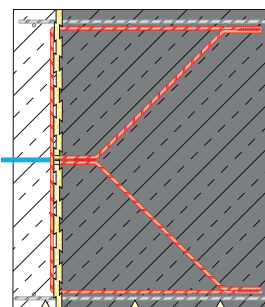
SOS-AF system (upstand with seam sheet)

SOS-AF

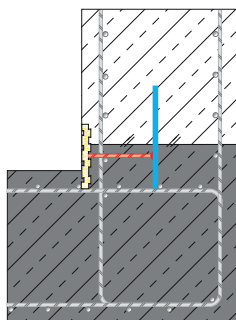


System for floor slabs - wall - ceiling

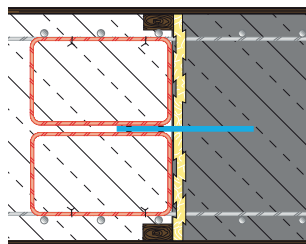
SOS-FAB
(floor slab)



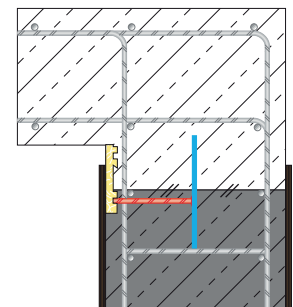
SOS-AF/BW
(floor slab - wall)



SOS-FAW
(wall - wall)



SOS-AF/WD
(wall - ceiling)



Our location





Please contact us!



+49 2304 981 43-0



info@quick-bauprodukte.de



www.quick-bauprodukte.de